

**FCGR2C Antibody (C-term)**  
**Affinity Purified Rabbit Polyclonal Antibody (Pab)**  
**Catalog # AP13730b****Specification**

---

**FCGR2C Antibody (C-term) - Product Information**

Application	WB,E
Primary Accession	<a href="#">P31995</a>
Reactivity	Human
Host	Rabbit
Clonality	Polyclonal
Isotype	Rabbit IgG
Calculated MW	35578
Antigen Region	260-288

**FCGR2C Antibody (C-term) - Additional Information****Gene ID** 9103**Other Names**

Low affinity immunoglobulin gamma Fc region receptor II-c, IgG Fc receptor II-c, CDw32, Fc-gamma RII-c, Fc-gamma-RIIc, FcRII-c, CD32, FCGR2C, CD32, FCG2, IGFR2

**Target/Specificity**

This FCGR2C antibody is generated from rabbits immunized with a KLH conjugated synthetic peptide between 260-288 amino acids from the C-terminal region of human FCGR2C.

**Dilution**

WB~~1:1000

E~~Use at an assay dependent concentration.

**Format**

Purified polyclonal antibody supplied in PBS with 0.09% (W/V) sodium azide. This antibody is purified through a protein A column, followed by peptide affinity purification.

**Storage**

Maintain refrigerated at 2-8°C for up to 2 weeks. For long term storage store at -20°C in small aliquots to prevent freeze-thaw cycles.

**Precautions**

FCGR2C Antibody (C-term) is for research use only and not for use in diagnostic or therapeutic procedures.

**FCGR2C Antibody (C-term) - Protein Information****Name** FCGR2C**Synonyms** CD32, FCG2, IGFR2

**Function** Receptor for the Fc region of complexed immunoglobulins gamma. Low affinity receptor. Involved in a variety of effector and regulatory functions such as phagocytosis of immune complexes and modulation of antibody production by B-cells.

**Cellular Location**

[Isoform IIC4]: Cytoplasm. [Isoform IIC2]: Cell membrane; Single-pass type I membrane protein

**Tissue Location**

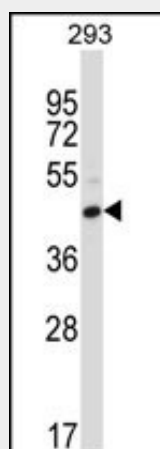
Isoform IIC1 is detected in monocytes, macrophages, polymorphonuclear cells and natural killer cells

**FCGR2C Antibody (C-term) - Protocols**

Provided below are standard protocols that you may find useful for product applications.

- [Western Blot](#)
- [Blocking Peptides](#)
- [Dot Blot](#)
- [Immunohistochemistry](#)
- [Immunofluorescence](#)
- [Immunoprecipitation](#)
- [Flow Cytometry](#)
- [Cell Culture](#)

**FCGR2C Antibody (C-term) - Images**



FCGR2C Antibody (C-term) (Cat. #AP13730b) western blot analysis in 293 cell line lysates (35ug/lane). This demonstrates the FCGR2C antibody detected the FCGR2C protein (arrow).

**FCGR2C Antibody (C-term) - Background**

Receptor for the Fc region of complexed immunoglobulins gamma. Low affinity receptor. Involved in a variety of effector and regulatory functions such as phagocytosis of immune complexes and modulation of antibody production by B-cells.